

VISUAL SMUGGLER

Creative Project Brief

Table of Content

[Location](#)

[Gear](#)

[Lighting Digrams](#)

Creative Brief

Summary

Visual Smugglers would be working on **Anna Holiday special**.

We would be helping with **cinematography services**, supplying the required **camera and lighting gear**.

Links

Youtube Reference video: <https://youtu.be/C0eziJvN-mE>

Technical Specs

FPS: **29.7 FPS**

Log Profile: **REC 709** (Depending on the camera we use, we could use the same [lut](#))

ISO: **400 Black Magic and Sony FS7 800 ISO**

Aspect Ratio: **16:9 aspect ratio**

Resolution: **1080p**

Cameras: **2 Cameras**

Movement: **Static + Movement**

Sound: **Lavalier microphone**

Image Keywords

Bright	Subjective Camera
---------------	--------------------------

Bright: Less shadows, should feel welcoming. Winter is coming and seeing something that looks like it shot on a nice day, can only encourage you to cook.

Subjective Camera Angle, when you are looking at it from a personal point of view. TV, Educational videos are subjective as the actor or person is looking directly into the camera.

Crew

Please include everyone details and dietary requirements

Name: Mr Gautam Narang or G

Position: Cinematographer

Mobile: +1 416 821 4730

Email: gautam@visualsmugglers.com

Dietary: Vegan

Questions

Do you want to add fairy lights and set decoration to the product shots? Are you going to add a

Who will be doing focus pulling, I have the Tilta Nucleus-Nano.

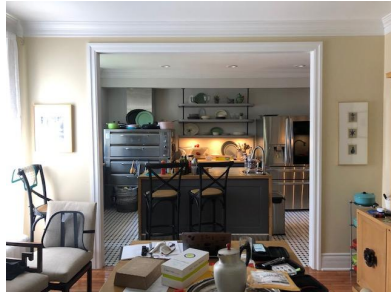
You could buy a roll of ND 0.6 at the <http://www.sourceshop.com/> to ND the window. The gaffer could do this. [Link](#) the easiest and fastest way.

Lights would be risky to keep outside, an Arri light could be used. Or we could just close them, not shoot in that direction and put a light where the window is.

You could also use Sheer Curtains [link](#)

Do you have a director monitor, any HDMI monitor will do.

Location



Gear

Cameras

- X 1 Blackmagic Pocket 4K
- X 1 Sony F7S

Micro 4/3 Lense

- X 1 VOIGTLANDER NOKTON 25MM F/0.95 TYPE II LENS FOR MICRO FOUR THIRDS
- X 1 VOIGTLANDER NOKTON 17.5MM F/0.95 TYPE II LENS FOR MICRO FOUR THIRDS
- X1 VOIGTLANDER NOKTON 42.5mm f/0.95 Micro Four Thirds Lens

Lighting

- X 1 LS C120d
- X 2 Aputure 120d
- X 1 Aputure MC
- X 1 Nanlite Forza 300 LED
- X 1 Forza 60
- X 1 GODOX 3 Feet, PARABOLIC SOFTBOX BOWENS MT
- X 3 Light Sands
- X 1 Impact PortaFrame Scrim Kit (24 x 36")
- X 1 Ikan EG05A2 Two Stage Aluminum Tripod with GH05 Head (Black)
- 1 Westcott Scrim Jim® Cine Kit 4' x 6'
- X 1 Neewer 31.5 inches Octagonal Soft Box
- X 1 Neewer Globe Lantern Softbox 32 inches

35mm Lenses

- Nikon Lens Series E 28mm 1:2.8 Lens
- Samyang 24mm T1.5 Cine Lens
- Samyang 35mm T1.5 Cine Lens
- Samyang 85mm T1.5 Cine Lens
- Sigma 18-35mm 1:1.8 DC 72 Lens + soft case
- Sigma 3.1 / 14mm ED AS Lens
- Sony 1.8/35mm Optical Steady Shot
- Sony 16-50 SELP1650 zoom lens (for a5000)
- Zeiss Planar T 50mm f/1.4 ZE

Things I'm Renting

- x 3 Sandbags (20 lbs)
- X 1 White Artificial Silk (8x8)
- x 2 AC's
- x 4 C-stands with Arms & Grip heads

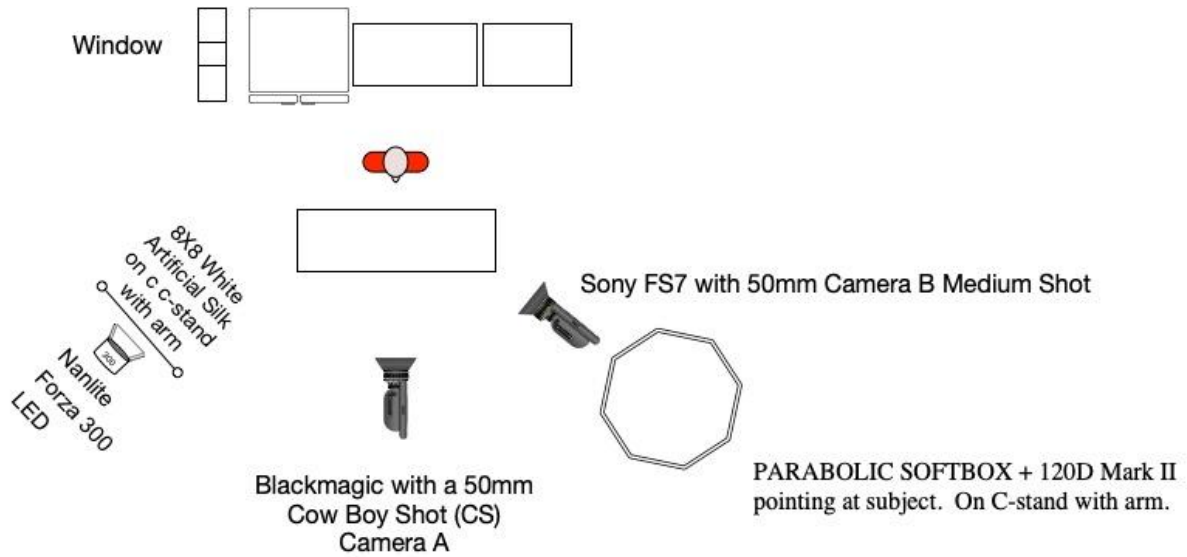
Monitor

Small HD 501

Could Rent

Matthews Mini Max Boom so we can boom, it cost \$150 a day though. [link](#)

Lighting Diagrams



Shot 1A: Master shot and Mid Shot

Camera A

Cow Boy Shot. **Shot** framed from the actor's mid-waist to right above their head. 50mm, f/ 2.8. Eye Level

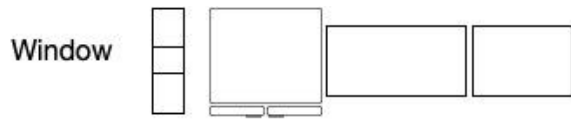


Camera B

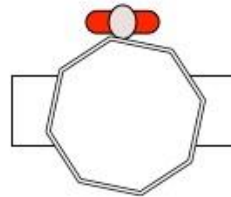
Medium Shot. Mid shot, or waist shot is a camera angle shot from a medium distance. 50mm eye level



Shot 2A: Close ups of finished product



Forza 300, rim light on product



PARABOLIC SOFTBOX (Overhead light set up) + 120D Mark II pointing at subject. On C-stand with arm.



Blackmagic with a 85mm Close Up



Tilt up to down.

Pan left to right.

Possibly add aputure mc light to background to add depth.

Other shots



Medium Close ups



Close ups



Close up, put MC light in to add some light. Warm colour temperature.

Notes

The camera should always be placed in the direction the action is happening

Example

Overheads can be done on c-stand overarm

